



INTERNATIONAL DRIVE COMMUNITY REDEVELOPMENT AGENCY (CRA)

Fiscal Year 2023-2024 Annual Report

BACKGROUND

The International Drive area is a vibrant destination focused on tourism, entertainment, and convention-related business. This hub of economic activity - a catalyst for the economic success of Orange County - has historically been challenged by transportation deficiencies which threaten the continued economic vitality of this activity center that provides 75,000 jobs within this region. The International Drive Community Redevelopment Area (CRA) was created in 1998 based upon a finding of the existence of transportation-related blight within the International Drive area. A Redevelopment Plan was adopted, and subsequently amended, which identified transportation improvements that could be implemented to address these blighted conditions by improving the transportation system within the CRA. This redevelopment plan includes those transportation projects which are eligible for funding utilizing, among other sources, CRA revenues. In June 2021, the Orange County Board of County Commissioners, sitting as the International Drive Community Redevelopment Agency, approved Resolution No. 2021-M-16, which modified the Plan to authorize additional community redevelopment activities in the International Drive Community Redevelopment Area. The Orange County Board of County Commissioners serves as the governing board for the International Drive Community Redevelopment Agency and directs the activities of the CRA. Additionally, a seven-member Advisory Committee has been appointed to provide recommendations to the governing board regarding implementation of the Redevelopment Plan.

REVENUE & EXPENSES

As is the case with all CRAs, the Redevelopment Plan is implemented utilizing tax increment revenues from the properties located within the CRA. The certified taxable value of properties within the International Drive CRA upon its creation in 1998 was **\$1,700,238,322**. As of January 1, 2023, the certified taxable value of these properties was **\$7,938,498,956**. This growth in taxable value of property within the International Drive CRA results in net increment revenues for FY 23-24 totaling **\$27,589,193**.



INTERNATIONAL DRIVE COMMUNITY REDEVELOPMENT AGENCY (CRA) Fiscal Year 2023-2024 Annual Report

TOTAL EXPENDITURE BREAKDOWN: Total expenditure during FY 23-24 was \$9,293,335. Of this total, \$5,101,265 represented full or partial costs associated with eleven (11) projects that were under development or completed during this fiscal year, and \$4,192,070 represented administrative costs and interfund transfers. The project expenditures are listed below:

PROJECT	EXPENDITURE
International Drive Transit Lanes	\$48,212
Tradeshow Boulevard Improvements	\$348,390
Kirkman Road Extension	\$315,210
International Drive Ultimate Transit System	\$0
I-Drive Wayfinding and Signage	\$466,668
Regional Transit Connectivity	\$2,089,717
International Drive Pedestrian Overpass	\$51,098
International Drive Adaptive System	\$340,089
Pedestrian Enhancements	\$684,151
Tangelo Park Housing for All – Housing Repair	\$313,998
I-Drive Economic Development	\$226,779
Tangelo Park Community Center	\$213,953
Tangelo Park Neighborhood Beautification & Aesthetics	\$0
TOTAL	\$5,101,265

Information, details, and specific action steps taken with respect to the listed projects by category are summarized below. Project categories are transportation, affordable and attainable Housing, workforce and economic development, community, cultural and institutional programs, and beautification and aesthetics.

INTERNATIONAL DRIVE COMMUNITY REDEVELOPMENT AGENCY (CRA)

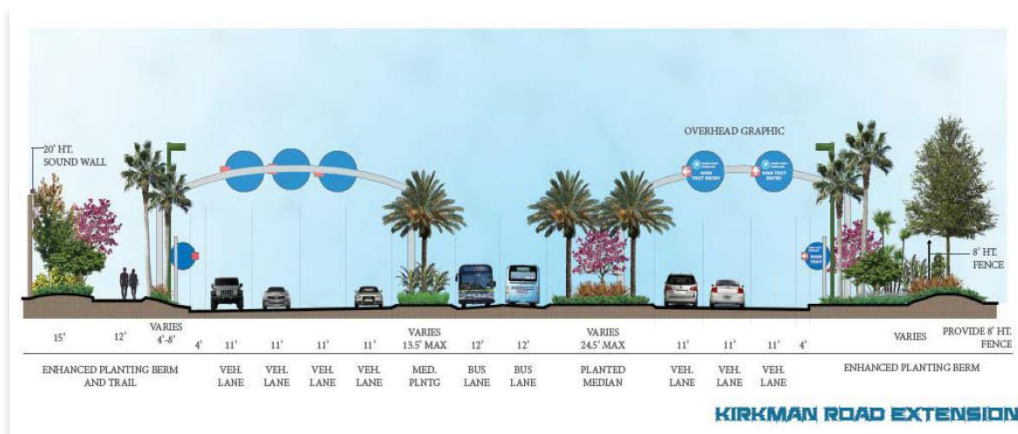
Fiscal Year 2023-2024 Annual Report

TRANSPORTATION

INTERNATIONAL DRIVE TRANSIT LANES: This project includes design and construction of improvements to International Drive and a portion of Universal Boulevard between Destination Parkway and Sand Lake Road that will provide 12 ft. lanes for transit use along this corridor. These improvements will enhance transit operations and improve traffic flow in this area by removing buses from the general use lanes. Funding in FY 23-24 was utilized to continue the final design and right-of-way assessments.



TRADESHOW BOULEVARD & KIRKMAN ROAD EXTENSION: An evaluation of the potential to implement improvements to Tradeshow Boulevard was Included as part of the International Drive Transit Feasibility and Alternative Technology Assessment (TFATA). Considerations included the addition of vehicular travel lanes and transit lanes between Destination Parkway and Universal Boulevard. Tradeshow Boulevard improvements are under design to address transit, Convention Center access, and capacity needs generated by the extension of Kirkman Road.





INTERNATIONAL DRIVE COMMUNITY REDEVELOPMENT AGENCY (CRA) Fiscal Year 2023-2024 Annual Report

Construction of Kirkman Road is underway and progressing to completion. The corridor extends from south of Sand Lake Road to the Tradeshow Boulevard and Universal Boulevard intersection. Kirkman Road was designed as a six-lane general use roadway with two dedicated transit lanes.

INTERNATIONAL DRIVE ULTIMATE TRANSIT SYSTEM: The first phase of the International Drive Transit Feasibility and Alternative Technology Assessment (TFATA) was performed to recommend a long-term transit solution within the CRA Redevelopment Area. The project's initial study analyzed connection to the overall regional transit efforts along Destination Parkway and connection to Sea Harbor Drive.

The TFATA project has advanced into the preliminary design phase. The County is collaborating with the regional transit agency LYNX to provide planning and conceptual engineering to pursue a Federal Transit Administration Small Starts grant under their Capital Investment Grant Program. Authorization to negotiate a contract with WSP for the required NEPA and Preliminary Engineering updates and FTA Small Starts Application/Project Development was approved by LYNX.

Negotiation of a detailed Local Agreement between the county and LYNX began in December 2024.

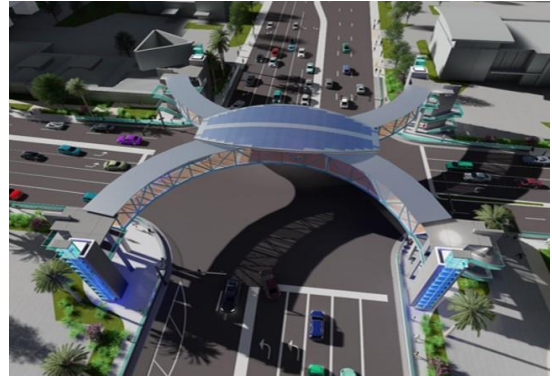




INTERNATIONAL DRIVE COMMUNITY REDEVELOPMENT AGENCY (CRA) Fiscal Year 2023-2024 Annual Report

INTERNATIONAL DRIVE PEDESTRIAN OVERPASS INTERSECTION ANALYSIS AND OVERPASS CONCEPTUAL DESIGN STUDY:

The International Drive Pedestrian Overpass Intersection Analysis and Overpass Conceptual Design Study developed conceptual design alternatives for the creation of a pedestrian overpass structure that will serve as both a functional pedestrian/cyclist crossing and an aesthetic gateway to the International Drive District.



The overpass will provide access to, and passage between, each of the four corners of the intersection of Sand Lake Road and International Drive.



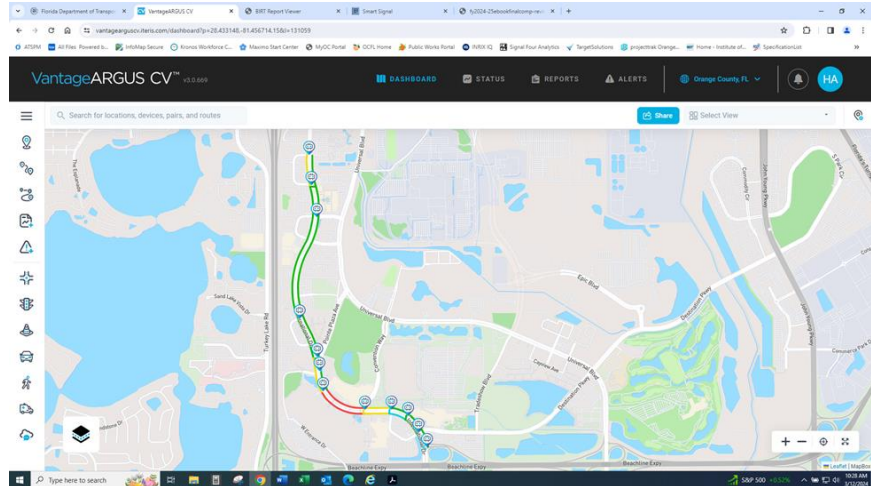
Orange County Real Estate Division is currently addressing access needs for implementation. Special treatments are included to draw motorists' awareness to the architectural significance of the intersection and overpass and their relationship to the Interstate-4 and Sand Lake Road Interchange improvements. The aesthetic gateway design shall establish the structure's relationship to the iconic features being planned for the interchange of Interstate-4 and Sand Lake Road.

ADAPTIVE TRAFFIC SIGNAL CONTROL: This project includes upgrades of traffic signal cabinets, signal detection system, and fiber optic communication lines. It also includes deployment of new cellular communication switches, Closed-Circuit Television (CCTV) cameras, Bluetooth/Connected Vehicle antennas, and audible pedestrian signals. Project limits are State Road 528 to Jamaican Court North for a total of 12 traffic signals.



INTERNATIONAL DRIVE COMMUNITY REDEVELOPMENT AGENCY (CRA) Fiscal Year 2023-2024 Annual Report

The adaptive signal control system is software that automatically adjusts traffic signal timing in response to real-time demand. The technology improves traffic safety and flow by optimizing local signal timing cycles to minimize overall stops and delays for all users, including pedestrians and buses. Leveraging these advanced features allowed us to balance vehicle and pedestrian needs for I-Drive, especially during the last MegaCon event.



The cellular communication switches provide backup communication in case the fiber optic lines are damaged. CCTV cameras allow remote monitoring of all traffic signals by the Traffic Management Center personnel to make manual timing adjustments, if necessary. The Bluetooth/Connected Vehicle antennas allow tracking travel time along the corridor to measure system performance, in addition to providing current signal timing data to connected vehicles for countdown to the next green, yellow, or red. The audible pedestrian signals allow visually impaired pedestrians to hear when it would be safe for them to cross the street.

PEDESTRIAN ENHANCEMENTS: The CRA continues to be a resource for implementing pedestrian enhancements within this area with an emphasis on safety. Pedestrian safety assessments and action plans were recently completed for the International Drive and Universal Boulevard corridors. These plans recommended a series of projects to address documented pedestrian challenges within the area. Expenditures in FY 23-24 included design and construction of new traffic signals along International Drive and Universal Boulevard that were recommended for pedestrian safety.



INTERNATIONAL DRIVE COMMUNITY REDEVELOPMENT AGENCY (CRA)

Fiscal Year 2023-2024 Annual Report

AFFORDABLE AND ATTAINABLE HOUSING

TANGELO PARK HOUSING FOR ALL HOUSING REPAIR: The Tangelo Park Housing for All Repair Program was marketed at a community meeting held at the Tangelo Park Baptist Church as well as program flyers were mailed to each address in the Tangelo Park community to notify residents of the home repair program. In FY 2023-2024 five (5) households were successfully assisted under the home repair program. The scope of work included roofing, plumbing, electrical, HVAC, carpentry, and sewer to address the life, health, safety, and code deficiencies found in the home. A relocation allowance was granted to three homeowners to help defer the cost of temporary relocation while the repairs were performed. The total spent on homeowner occupied repairs and rehabilitation was \$313,998 to make five homes safer and more habitable.

WORKFORCE & ECONOMIC DEVELOPMENT

Funding was used in 2024 to expand the English for Speakers of Other Languages (ESOL) for Working Professionals Program to more employers. In 2024, participating employers in the



CRA were Rosen Hotels & Resorts, Paramount Hospitality Management, Hilton Orlando, the Orange County Convention Center, and CoCo Key Resort and Water Park. County staff onboarded Orange Technical College to complement University of Central Florida (UCF) Global as an instruction partner and to build capacity in the public school system for this type of on-site programming. Additional programs addressing the needs of employees and employers within the CRA are in development.



INTERNATIONAL DRIVE COMMUNITY REDEVELOPMENT AGENCY (CRA) Fiscal Year 2023-2024 Annual Report

COMMUNITY, CULTURAL AND INSTITUTIONAL PROGRAMS

THE TANGELO PARK COMMUNITY CENTER: Construction of the new Tangelo Park Community Center began in December of 2024. Since then, the site has been fine graded, interior demolition within the existing gymnasium has begun, underground utilities are being installed, and the new building footer and stem wall construction is underway. The new community center will feature a swimming pool, brand new gymnasium, and plenty of space to host local services and activities. In the meantime, residents can stop by the temporary community center and speak with the community center manager. The project is currently on track for completion in January 2026.

BEAUTIFICATION AND AESTHETICS

COMMUNITY ENHANCEMENTS: The Tangelo Park Neighborhood Beautification Project includes the installation of landscaping, enhanced lighting, new sidewalks, and crosswalks, in addition to new neighborhood entrance markers. It was originally budgeted for \$200,000, and the total awarded contract includes \$273,801.62 with scheduled completion in 2024.

Additionally, the CRA funded the I-Drive Wayfinding Signage Project, which seeks to enhance the I-Drive District through clear, concise, and inviting signage that celebrates its unique sub-districts. The project features over 170 signs, including larger gateway signage along major corridor entryways into the district and its eight subdistricts, and a variety of aesthetically pleasing and themed vehicular and directional signs that will more effectively guide motorists and pedestrians throughout the district. The \$1.8 million CRA-funded project is split into two phases, with the first phase's installation underway (right).





INTERNATIONAL DRIVE COMMUNITY REDEVELOPMENT AGENCY (CRA)

Fiscal Year 2023-2024 Annual Report

GOALS & FUTURE PLANNING:

INNOVATION, COLLABORATION & INCLUSION: During Mayor Jerry L. Demings' second term, his three leadership principles of innovation, collaboration and inclusion have never been more important. With those leadership principles in mind, Mayor Demings believes Orange County can and will be a community that works for everyone. The transformational impact we have been able to achieve throughout the I-Drive CRA is a testament to his three leadership principles in action. During the last few years, we have successfully expanded the impact of the CRA's resources throughout the district. With a focus on more than just transportation needs, the Board of County Commissioners, at the recommendation of the I-Drive CRA Advisory Committee, invested in a diverse program focusing on affordable and attainable housing, economic development, community, cultural and institutional programs and beautification and aesthetics. Orange County looks forward with optimism as to what can be accomplished throughout the CRA by expanding the use of these dollars; the net effect we hope will empower the CRA to reach its full potential and provide economic mobility for all who live and work within the CRA.